

Project Plan: Clipper Mills

8/9/23



"Our vision is to create communities within a landscape that are resistant to the devastating impacts of wildland fires."



Project Timeline:

November 2020 – March 2026

Project Description:

A Forest Health Feather River Watershed Resiliency fuels reduction and maintenance project located in Clipper Mills spanning Woodleaf Tunnel Rd. to Binet Rd., & La Porte Rd.

Project Goals:

1. Create a continuous fuel break around the community of Clipper Mills.
2. Restore forest health by reducing ladder fuels and thinning the forest floor.
3. Maintain previously treated project areas.

Treatment Methods:

- Mastication
- Herbicide
- Hand Work

Completed Acres: 484.3

Projected Outcomes:

- Mastication Acres = 393.5
- Herbicide = 420.5
- Hand Work = 13.2
- Landowner Participants = 37

Project Funding:

Forest Health Feather River



Before



After



Fuels treatment with mastication

"Forest Health and Feather River Watershed Resilience, Butte County, is part of California Climate Investments, a statewide program that puts billions of Cap-and-Trade dollars to work reducing the GHG emissions, strengthening the economy, and improving public health and the environment—particularly in disadvantaged communities. The Cap-and-Trade program also creates a financial incentive for industries to invest in clean technologies and develop innovative ways to reduce pollution. California Climate Investments projects include affordable housing, renewable energy, public transportation, zero-emission vehicles, environmental restoration, more sustainable agriculture, recycling, and much more. At least 35 percent of these investments are located within and benefiting residents of disadvantaged communities, low-income communities, and low-income households across California. For more information, visit the California Climate Investments website at: www.caclimateinvestments.ca.gov."

Butte County Fire Safe Council

6585 Clark Rd. Ste. 240.

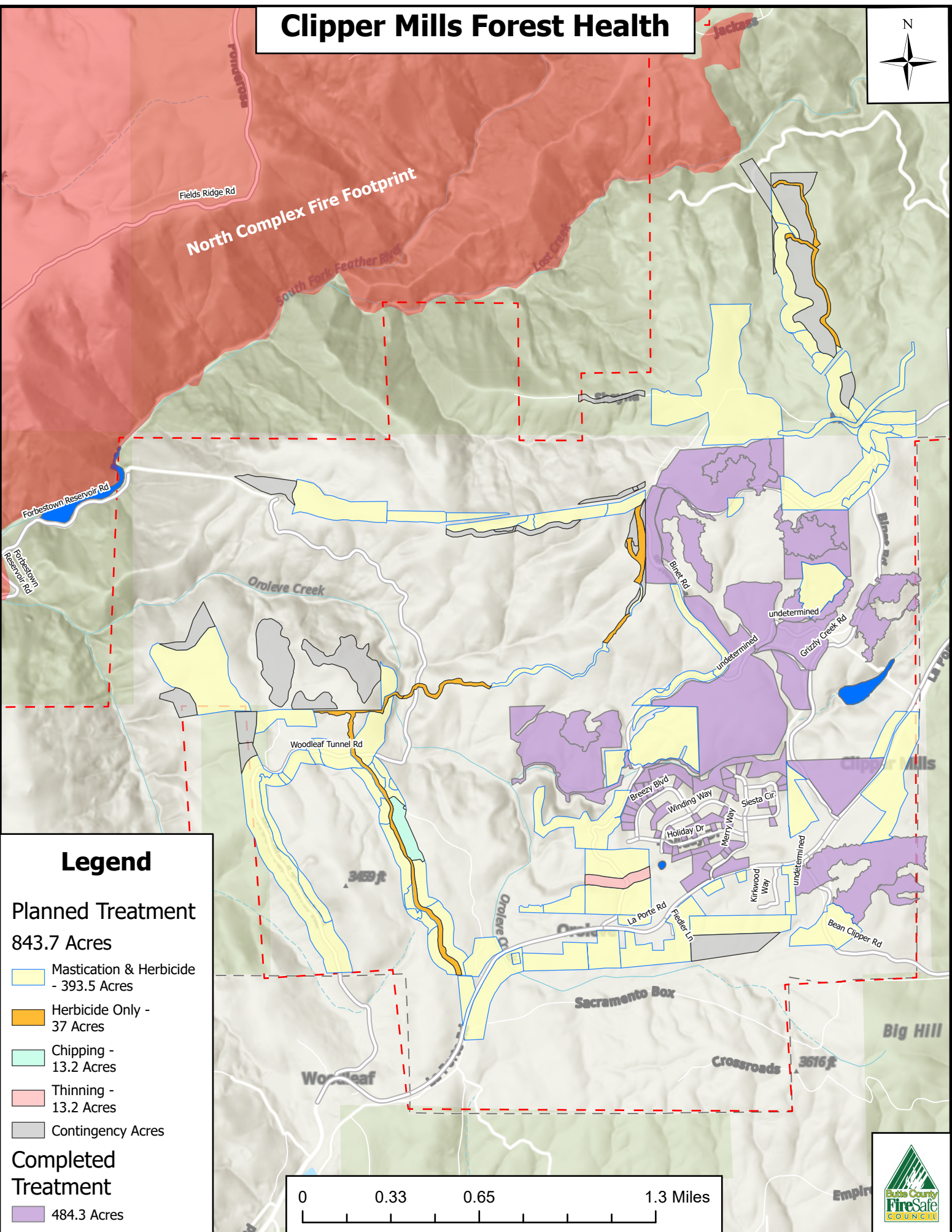
(530) 877-0984

www.buttefiresafe.net

Clipper Mills Forest Health



North Complex Fire Footprint



Legend

Planned Treatment
843.7 Acres

- Mastication & Herbicide - 393.5 Acres
- Herbicide Only - 37 Acres
- Chipping - 13.2 Acres
- Thinning - 13.2 Acres
- Contingency Acres

Completed Treatment

- 484.3 Acres

0 0.33 0.65 1.3 Miles

