



Date: 12/23/2025

Contact: Taylor Nilsson

Website: <https://buttefiresafe.net/>

Phone: 530-877-0984

**Press Release**  
**Notice of Fuels Reduction:**  
**Paradise - South Paradise Blue Oaks Project**

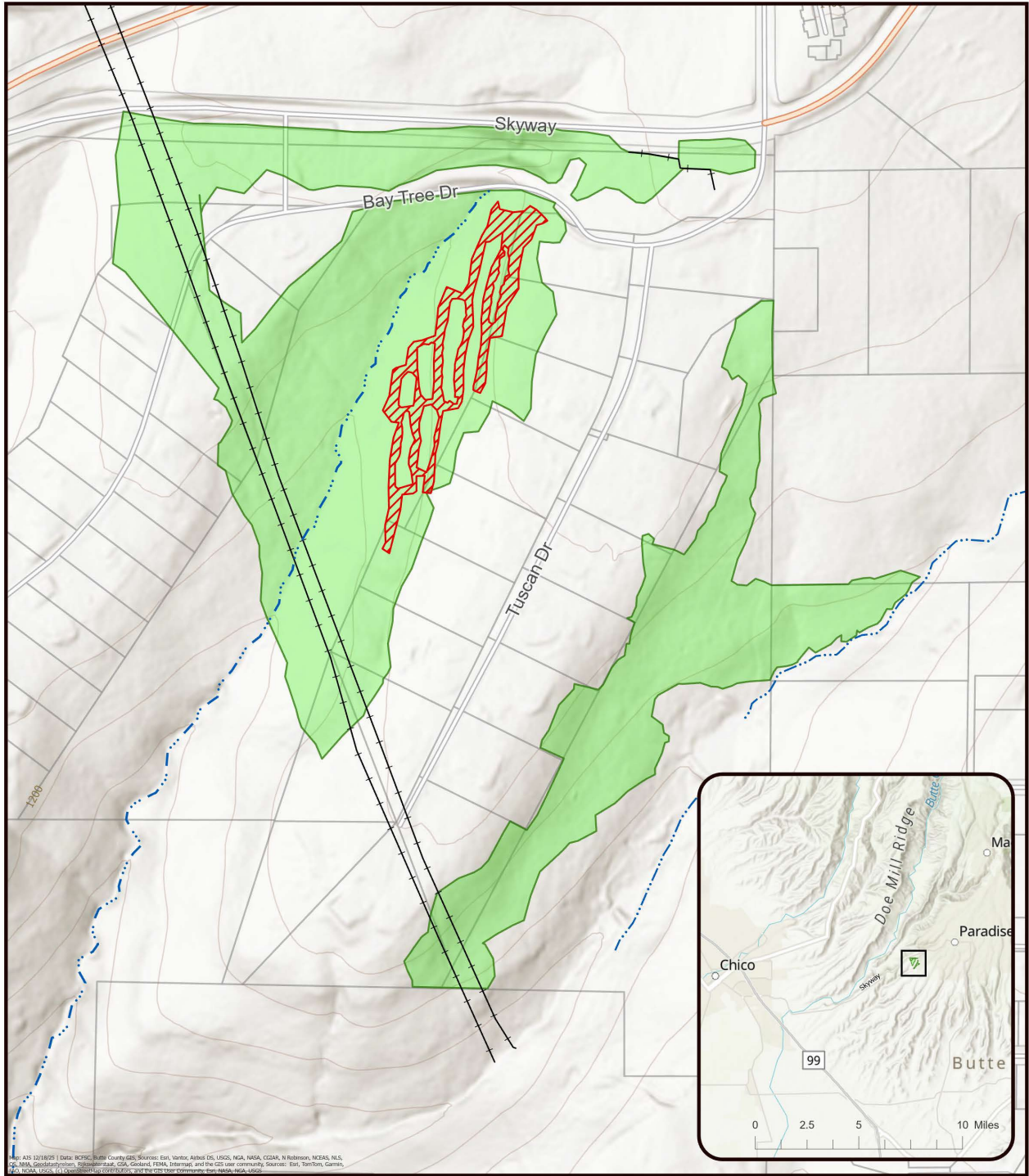
To enhance public safety and reduce hazardous fuels in Paradise, the Butte County Fire Safe Council (BCFSC), in collaboration with CAL FIRE and California Climate Investments (CCI), will carry out fuels reduction through hand thinning. These efforts aim to decrease the continuity of dense vegetation, improve the health of the land, decrease flammability of the community areas, and accelerate decomposition of treated material within this piece of the Camp Fire burn scar.

The project is strategically located within the Blue Oak Terrace community (south of Paradise and adjacent to Skyway), spanning 50.8 acres of treatment. The location is part of a larger effort to connect previously completed and upcoming projects to improve overall community safety. Understory vegetation will be reduced in two phases to establish a community fuel break, the first of which is hand thinning. Phase 1 work began in mid-December and will continue until the project is completed in March 2026. Phase 2 will begin in late spring.

The Butte County Fire Safe Council is a grassroots non-profit organization that implements a variety of fuels reduction and forest health projects in operation around Butte County including Forbestown, Berry Creek, Forest Ranch, Cohasset, Paradise, Big Chico Creek Canyon, and Oroville Foothills. More information can be found on BCFSC's website <https://buttefiresafe.net>, Facebook or by calling our office at (530) 877-0984.

*Funding for Butte County Forest Resilience and Restoration Project was provided by CAL FIRE's Forest Health Program, as part of California Climate Investments. California Climate Investments, a statewide program that puts billions of Cap-and-Invest dollars to work reducing GHG emissions, strengthening the economy, and improving public health and the environment- particularly in disadvantaged communities. The Cap-and-Invest program also creates a financial incentive for industries to invest in clean technologies and develop innovative ways to reduce pollution. California Climate Investments projects include affordable housing, renewable energy, public transportation, zero-emission vehicles, environmental restoration, more sustainable agriculture, recycling, and much more. At least 35 percent of these investments are located within and benefiting residents of disadvantaged communities, low-income communities, and low-income households across California. For more information, visit the California Climate Investments website at: [www.caclimateinvestments.ca.gov](http://www.caclimateinvestments.ca.gov)*

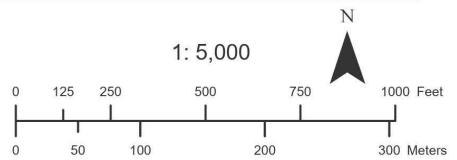
# CCI 8GG23607: South Paradise Blue Oaks Project



Map: A15 12/18/25 | Data: BCFC, Butte County GIS, Sources: Esri, Verity, Atlas DG, USGS, NGA, NASA, CGIAR, N Robinson, NCEAS, NLS, CGO, NMA, Goodfellow, R. Zlotnick, C. A. G. G. G., FEMA, Intermap, and the GIS user community. Sources: Esri, TomTom, Garmin, Esri, NOAA, USGS, U.S. Geological Survey, and the GIS user community. Date: 12/18/25



- Hand Thinning - 50.8 Acres
- Leach Lines - 2.5 Acres
- Power Line
- Class 2 Watercourse
- Class 3 Watercourse
- Parcel
- Contour Interval - 40ft



*Funding for this project provided by the California Department of Forestry and Fire Protection's Forest Health Program as part of the California Climate Investments Program*