



Date: 12/19/25

Contact: Taylor Nilsson

Website: <https://buttefiresafe.net/>

Phone: 530-877-0984

Press Release

Big Ridge Hazard Tree and Fuels Reduction Project Rx Project SMOKE VISIBLE

We are grateful that conditions may allow for a planned **pile burning** project in the **Berry Creek** area to enhance community safety. This project aims to reduce hazardous fuels by burning forest understory piles, supporting healthier fire ecology. Ignitions will begin this weekend and continue throughout the winter months depending on weather conditions. This carefully planned burn will only take place under favorable conditions, with a dedicated fire crew onsite diligently monitoring.

All necessary permits and approvals have been obtained from local and state agencies to ensure that the project meets all safety, environmental, and air quality requirements. The project is being conducted in close coordination with regulatory partners and fire professionals to protect public health and safety.

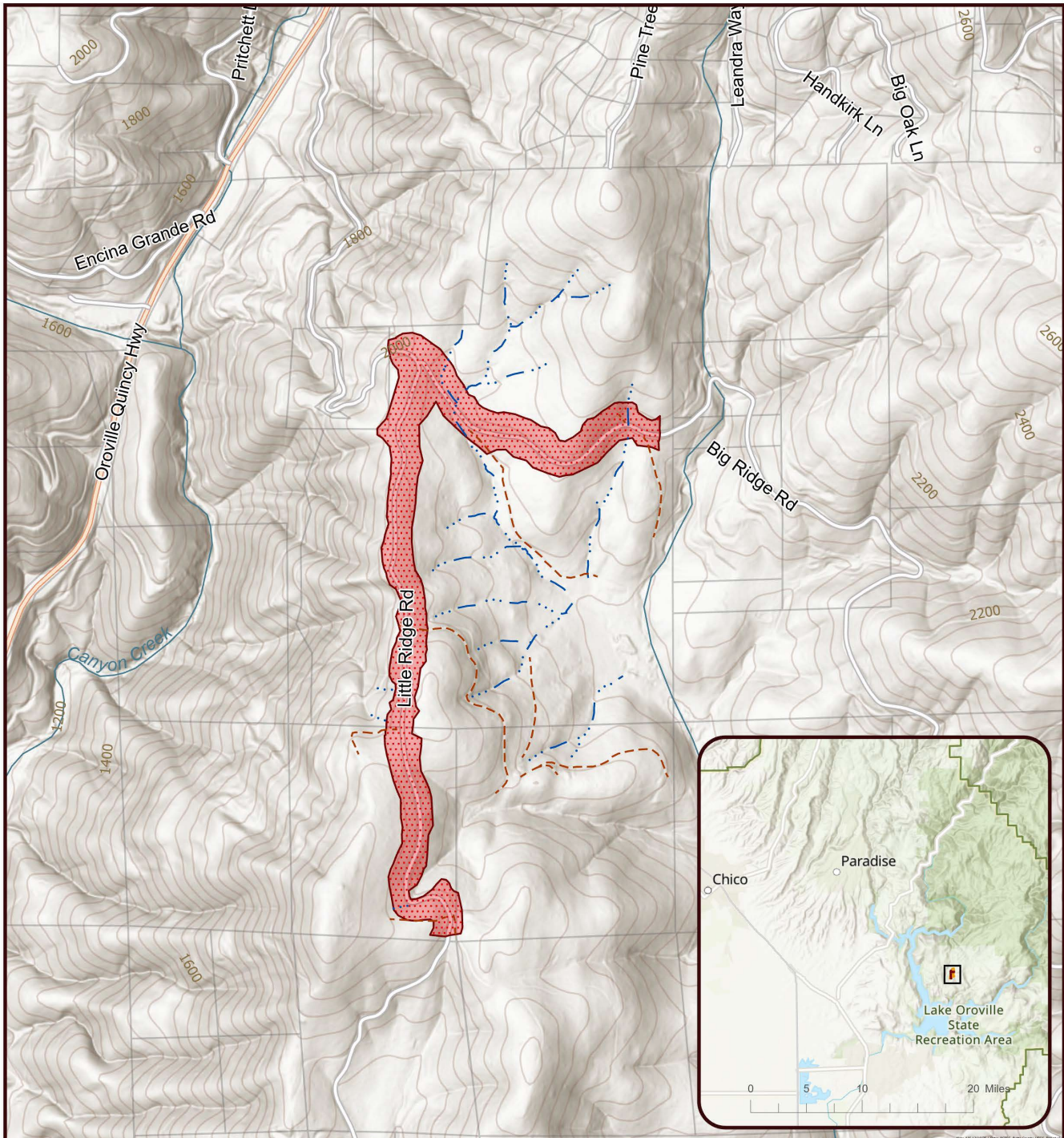
SMOKE WILL BE VISIBLE – Residents in **Berry Creek** should expect to see smoke. We will actively monitor air quality and smoke dispersion throughout the day to ensure safety. Stay tuned for updates as conditions are finalized.

The Butte County Fire Safe Council is a grassroots non-profit organization that implements a variety of fuels reduction and forest health projects in operation around Butte County including Forbestown, Berry Creek, Forest Ranch, Cohasset, Paradise, Big Chico Creek Canyon, and Oroville Foothills. More information can be found on BCFSC's website <https://buttefiresafe.net>, Facebook or by calling our office at (530) 877-0984.

Funding for the Big Ridge Hazard Tree and Fuels Reduction Project, 24-CA-11051100-012, is provided by the Plumas National Forest of the U.S. Forest Service, and the Department of Agriculture (USDA)

Big Ridge Project Notice:

Prescribed Pile Burning



- Pile Burning - 28 Acres
- Class 3 Watercourse
- Skid Trail
- Parcel
- Contour Interval - 40ft

1: 10,000

