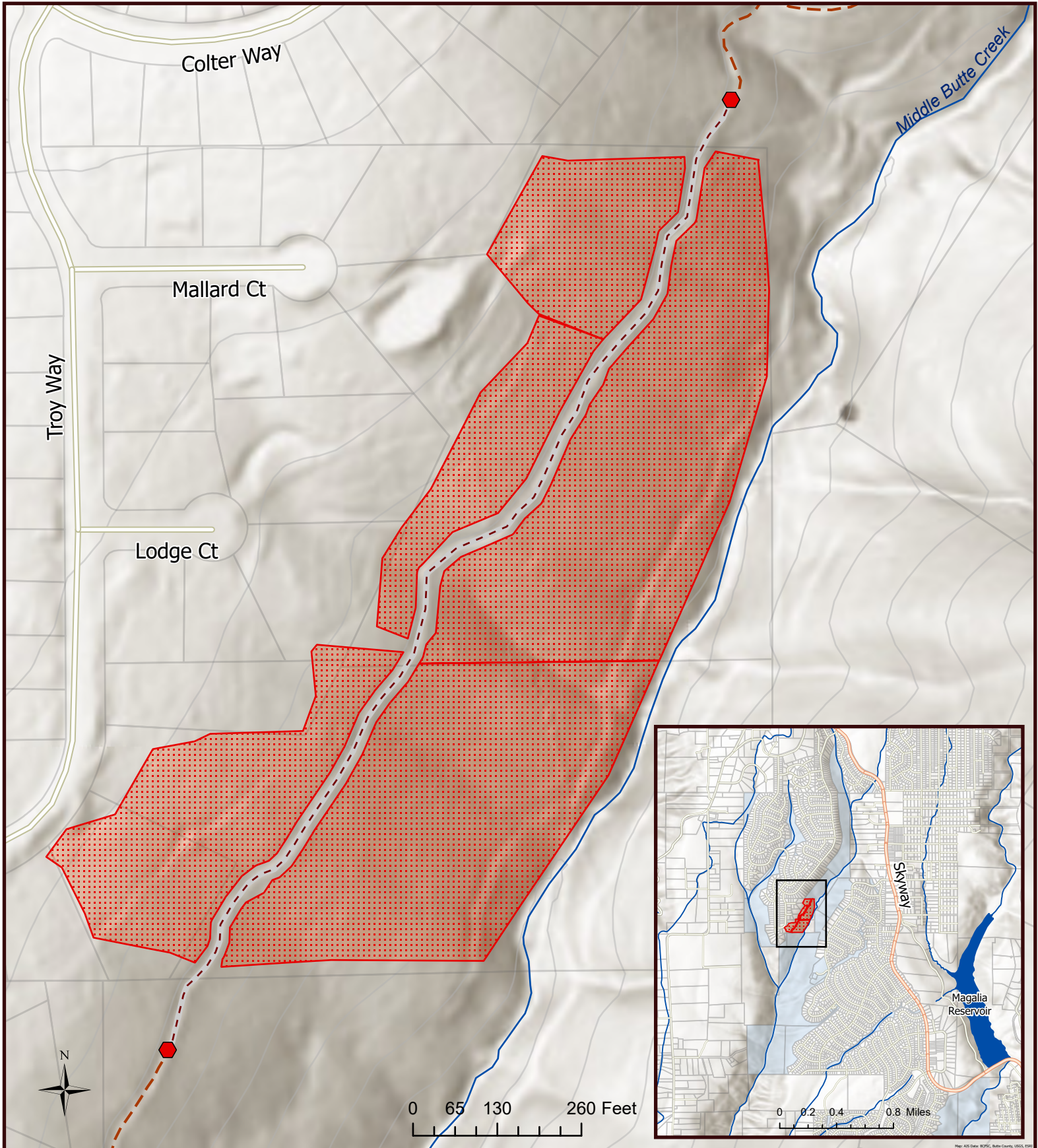


SNC 1547 Project Notice:

Prescribed Pile Burn - Part of the POA Trail Temporarily Closed



- | | | | |
|---------------------------|--------------|-------------|-------------------------|
| Rx Pile Burn - 13.5 Acres | Trail Closed | Waterbodies | Contour Interval - 40ft |
| POA Flume Trail | Major Roads | Waterways | |
| POA Flume Trail Closed | Roads | Parcel | |

